



579

COMPETITIVE COMPARISON



{ TABLE OF CONTENTS }

PETERBILT VALUE	4
PRODUCT OVERVIEW	6
EXTERIOR	8
Cab	10
Hood	12
Crown & Grille	14
Bumper	16
Under Hood Access	18
Visibility	20
Door	22
Mirrors	24
Headlights & Marker Lights	26
Baggage/Access Doors	28
AERODYNAMICS	30
EPIQ	32
Chassis Fairings	34
Side Extenders & Other Aero Devices	36
CAB INTERIOR	38
Dash & Infotainment	40
Steering Wheel, Column & Pedals	42
HVAC	44
Seating	46
Doorpads	48
SLEEPER INTERIOR	50
Sleeper Features	52
Bunk Size	54
Cabinets & Storage	56
CHASSIS	58
Chassis Features	60
SMARTLINQ	62



{ PETERBILT VALUE }

Peterbilt trucks are inspired by purposeful design and manufactured with premium grade materials utilizing the most advanced, innovative technologies to provide customers with the highest quality vehicle available in the industry. Throughout this competitive comparison, areas highlighted in **bold/red** denote where Peterbilt is Best-in-Class compared to competitive products. Information noted with a 💰 takes Best-in-Class features one step further by providing value statements that benefit the customer by helping reduce the overall cost of operation for their business.

At Peterbilt, Class Pays.



579

Legendary Quality. Superior Fuel Economy. Premium Value. These are the pillars of Peterbilt's flagship Model 579. The 579 represents the single largest product investment in the company's history, resulting in the most durable, fuel-efficient truck available in the industry today. This competitive comparison was created for Peterbilt sales professionals to use as a resource and guide on how to sell the benefits and advantages of the 579 against competitive products and showcases the 579's proven performance, lowest cost of operation and highest overall value.



Peterbilt
Model 579



Freightliner
Cascadia Evolution



International
ProStar



Volvo
VN 780

Hood Lengths	117" and 123" BBC	113" and 125" BBC	113" and 122" BBC	113" and 122" BBC
Sleeper Lengths	44", 72" and 80"	48", 60" and 72"	56" and 73"	42", 61" and 77"
Engines	PACCAR MX-13 – 380-500HP Cummins ISX15 – 385-600HP	Detroit Diesel DD15 – 455-505HP Cummins ISX15 – 385-600HP	International N13 – 390-475HP Cummins ISX15 – 385-550HP	Volvo D13 – 335-485HP Volvo D16 – 450-535HP Cummins ISX15 – 385-565HP
Transmissions	Eaton Fuller Advantage Manual Eaton UltraShift PLUS & Advantage Allison	Eaton Fuller Advantage Manual DT12 AMT Allison	Eaton Fuller Advantage Manual Eaton UltraShift PLUS Allison TC10	Volvo AT and I-Shift Eaton Fuller Advantage Manual Eaton UltraShift PLUS ZF Freedomline
Front Axles	Dana Spicer Meritor	Detroit Meritor Henrickson	Dana Meritor Hendrickson	Volvo Meritor Dana Hendrickson
Rear Axles	Dana Spicer Meritor	Dana Spicer Meritor	Dana Spicer Meritor	Dana Spicer Meritor



{ EXTERIOR }

The heart of the Model 579 is its wide, aluminum cab that is lightweight for increased payload capacity yet incredibly strong for rugged durability. The 579 was stringently tested at the PACCAR Technical Center, replicating millions of miles of travel in real-world conditions to ensure the cab's sturdiness and longevity. With a design emphasis on driver safety, the 579 is the only vehicle standard with air disc brakes and electronic stability control, and it offers the best forward lighting system in the industry. For ease of serviceability, a multi-piece hood, bumper and fairings manufactured from high quality materials are easy and cost efficient to replace. Available with two hood lengths and a variety of detachable sleepers, the 579 can be spec'd to meet the needs of virtually any application.



CAB

- ▶ In design, materials and construction, the Model 579's cab has no contemporaries. It is the **industry's newest cab** and it's **produced using the most technologically advanced tools available**, including stamped panel technology.
- ▶ Stamped aluminum panels provide **unparalleled weight optimization**, corrosion resistance and durability. The aluminum cab frame is complemented by strategically placed steel reinforcements for additional strength in key areas.
- ▶ The spacious, 2.1 meter wide aluminum cab strikes an optimal balance between strength and weight not found in competitors' all-steel cabs.
- ▶ The 579's cab passed both U.S. and E.U. testing practices, making it **one of the safest trucks** available.



Peterbilt
Model 579



Freightliner
Cascadia Evolution



International
ProStar



Volvo
VN 780

Material	Stamped Aluminum	Stamped Aluminum	Stamped Steel	Stamped Steel
Cab Design Implemented	2012	2007	2007	1996
Width	2.1 Meter	2.3 Meter	2.1 Meter	2.3 Meter
Crash Test	Passes SAE and ECE	Passes SAE and ECE	Passes SAE Cab Roof and ECE Roof Load	Passes Swedish Impact Test
Cab Measurements				
A-Pillar to A-Pillar	76"	82"	75"	81"
B-Pillar to B-Pillar	81"	89"	80"	87"
C-Pillar to C-Pillar	94"	94"	94"	94"

HOOD

- ▶ Aerodynamic performance doesn't have to come at the expense of style, and the Model 579's newly designed hood, crown and grille are unmistakably Peterbilt.
- ▶ A proprietary **hood tilt assist system requires the least amount of effort to open the 579's hood** – less than any other truck in the industry. And, once it's open, it stays open with an **anti-blow down protection feature that prevents unwanted closures.**
- ▶ Peterbilt's multi-piece hood is molded from SMC (sheet molding compounds) that offers superior strength and reliability under the most demanding environments. The modular hood also helps facilitate ease of repair.
- ▶ The 579 **hood opens a full 70 degrees to provide** service technicians ample access to perform common maintenance procedures.



Modular Hood



Peterbilt
Model 579



Freightliner
Cascadia Evolution



International
ProStar



Volvo
VN 780

Material	SMC	SMC	SMC	SMC
Number of Pieces	3	3	3	3
Latch	Recessed, Easy to Access	Recessed, Difficult to Access	Recessed, Difficult to Access	Under Steering Column
Hood Opening Force (lbs.)	35 lbs.	50 lbs.	35 lbs.	36 lbs.
Tilt	70 Degrees	68 Degrees	63 Degrees	61 Degrees
Blow Over Device	Yes, Automatic Latch	None	Yes, Through Gas Strut Tension	Yes, Through Gas Strut Tension

CROWN & GRILLE

- ▶ The chromed crown is as durable as it is stylish with a distinctive Peterbilt look that is further emphasized with Peterbilt's signature three bar design.
- ▶ The grille is constructed of **high-strength stainless steel that protects the front of the vehicle from debris and impacts** far better than competitive plastic grilles. Additionally, the Model 579 has a protective structure behind the grille to provide even greater protection to the radiator and other components.
- ▶ Peterbilt's impact bar minimizes damage to the radiator due to debris commonly seen when traveling cross-country. Our competitors have a plastic grille without an impact bar, which makes it susceptible to greater frontal impact damage and increased service costs.



Peterbilt
Model 579

Material	💰 Stainless Steel Punched
Available Options	Bugscreen Behind Grille
Radiator Size (in.²)	1,325"
Impact Bar	Standard



PETERBILT VALUE

The reinforced crown and grille with stainless steel grille sheet protects the radiator from debris. Radiator repairs can cost \$2,300 or more.



Freightliner
Cascadia Evolution

Material	Plastic
Available Options	Molded in Bugscreen
Radiator Size (in. ²)	1,625"
Impact Bar	N/A



International
ProStar

Material	Plastic
Available Options	Bugscreen Behind Grille
Radiator Size (in. ²)	1,055"
Impact Bar	N/A



Volvo
VN 780

Material	Plastic
Available Options	Bugscreen Behind Grille
Radiator Size (in. ²)	1,395"
Impact Bar	N/A

BUMPER

- ▶ The Model 579 multi-piece bumper continues Peterbilt's tradition of service-minded designs to maximize uptime and minimize cost. With the bumper's three-piece design, a corner section of the bumper can be replaced in the event of damage rather than replacing the entire structure.
- ▶ With **more choices than any competitor**, the Model 579 can be spec'd with a bumper to meet virtually every customer application and aesthetic. Available bumper styles include painted, molded in-color and chromed steel.



Peterbilt
Model 579

Material	Composite or Steel
Number of Pieces	3
Available Options:	Painted
	\$ Molded In-Color (Composite)
	Steel



PETERBILT VALUE

The 579's molded in-color bumper can save up to \$525 by eliminating the costs to repaint a replacement bumper.



Freightliner
Cascadia Evolution

Composite or Stainless Clad Aluminum
3
Painted
Molded In-Color
Steel



International
ProStar

Composite or Stainless Clad Aluminum
3
Painted
Molded In-Color
Bright Overlay



Volvo
VN 780

Composite or Stainless Clad Aluminum
3
Painted

UNDER HOOD ACCESS

- ▶ The Model 579's hood opens **a full 70 degrees to give service technicians ample access to common maintenance procedures**, such as checking and filling fluids.
- ▶ The engine compartment was designed to locate **all fluids on the driver's side** – the cooler side of the engine – and fluid levels are easy to see and replenish when necessary. Competitive designs place fluid containers on both sides of the engine, requiring technicians to go back and forth during service checks, and some designs obscure fluid containers from easy visual checks.
- ▶ Electrical connections are organized, easy to reach and include locking connectors for enhanced reliability.



Peterbilt
Model 579




Freightliner
Cascadia Evolution



International
ProStar



Volvo
VN 780

Fluid Check Location	All Fluids on Driver Side	All Fluids on Driver Side	Fluids on Both Sides	All Fluids on Driver Side
Fluids Difficult to Access	None	Windshield Washer Fluid	Windshield Washer Fluid	None
Engine Compartment Access	Clear Access	Restricted by Bumper	Restricted by Splash Guards	Restricted by Splash Guards
Electrical Layout	 Open Firewall with Locking Connectors	Open Firewall, Partial Locking Connectors	Air Cleaner Blocks Access	Open Firewall, Partial Locking Connectors



PETERBILT VALUE

Compared to the competitions' partial locking connectors, the 579's robust locking connectors can reduce or eliminate damaged wiring due to fatigue. Damaged wiring repairs can cost more than \$500.

VISIBILITY

- ▶ **The 579's windshield – the largest in the industry** – side windows and exterior mirrors combine to give operators a panoramic view from the cab for excellent overall visibility and improved safety.
- ▶ The tall windshield is complemented by a lower dash brow resulting in improved line-of-sight for the driver and greater visibility to surrounding traffic and road signals and signs.
- ▶ The one-piece windshield is bonded in place for a superior seal. In the event it needs to be replaced, two locators found in the cowl and corresponding windshield encapsulation seal allows for quick and easy replacement. Competitive roped-in style windshields can be prone to leaks and result in higher replacement costs. Additionally, two-piece windshields often sacrifice visibility and wiper coverage for slightly lower replacement costs.



Peterbilt
Model 579



Freightliner
Cascadia Evolution



International
ProStar



Volvo
VN 780

Windshield Total Glass (in.²)	2,147"	2,109"	2,074"	2,038"
Type: Bonded or Roped	1-Piece Bonded	2-Piece Roped and Bonded	1-Piece Bonded	1-Piece Roped
Side Window Total Glass (in.²)	Single, 1,312"	Split, 1,226"	Split, 1,060"	Single, 1,456"



Wiper Coverage

DOOR

- ▶ The Model 579's strong, aluminum doors have a **triple sealing system that provides a tight closure and minimizes noise and air from entering the cab.** Competitive doors with a two-seal closure are less secure and allow more noise to enter the cab.
- ▶ Doors on the 579 have one of the widest openings in the industry for improved safety when entering or exiting the vehicle. The door's double-wall, stamped design is light-weight and features a concealed hinge system that holds up to harsh vocational cycles.
- ▶ **Ease of entry and egress are facilitated by three points of contact:** staircase-style steps, a grab handle mounted to the A-pillar and a grab handle mounted to the B-pillar. Some competitive models fall short with narrow, ladder style steps and only one grab handle, forcing the driver to pull up on the steering wheel or door pocket.



Triple Seal



Peterbilt
Model 579



Freightliner
Cascadia Evolution



International
ProStar



Volvo
VN 780

Door Material	Aluminum	Aluminum	Steel	Steel
Number of Seals	3: Double Seal on Door, Single on Frame	2: Single Seal on Door, Single Seal on Frame	2: Single Seal on Door, Single Seal on Frame	2: Single Seal on Door, Single Seal on Frame
Hinge Type	Two-Hinge System	Two-Hinge System	Two-Hinge System	Two-Hinge System
Cab Access	Provides 3-Point Contact	No 3-Point Contact	No 3-Point Contact	Provides 3-Point Contact
LH Grabhandles	A and B-Pillar	Single B-Pillar	Single B-Pillar	A and B-Pillar
Door Dimensions (in.)				
Height (Outside)	61"	63"	58"	59"
Width (Outside)	42"	45.75"	43"	43"
Latch to Strike Plate (Largest Opening)	40.5"	48.5"	39.5"	49"
Latch to First Obstacle (Smallest Opening)	39.5"	47.5"	38"	46"
Opening Angle	76 Degrees	76 Degrees	64 Degrees	77 Degrees

MIRRORS

- ▶ Aerodynamic mirrors are mounted to the door with cast aluminum arms and bases, keeping the mirrors stable and free from vibrations.
- ▶ Large mirror surfaces with integrated convex mirrors provide excellent down-vehicle visibility, eliminating the blind spot often associated with traditional cowl-mounted mirrors.
- ▶ Mirrors can be serviced with common tools and there is only one electrical connection, concealed and safe from the elements.
- ▶ Mirrors can be ordered in two styles: painted or chromed.



Peterbilt
Model 579



Freightliner
Cascadia Evolution



International
ProStar



Volvo
VN 780

Mounting Location	Door	Door	Door	Door
Mounting Type	\$ Pedestal	Pedestal	2-Point Bracket	3-Point Bracket
Glass Surface Area Flat/Convex (in.²)	91" / 49"	89" / 45"	100" / 41"	125" / 49"
Standard Options:	Heat Painted Body Color or Bright	Heat Black or Bright	Heat Painted Body Color or Bright	Heat Painted Body Color
Available Options:	Power	Power	Power	Power
Standard Passenger Door Lookdown	Yes	Yes	No	Yes
Hood Mirrors Glass Surface Area (in.²)	48"	51"	47"	49"



PETERBILT VALUE

The Model 579's unique mirror break-away feature minimizes damage and can cost up to \$750 to repair on some competitors' designs.

HEADLIGHTS & MARKER LIGHTS

- ▶ Peterbilt leads the industry in forward lighting performance with the best coverage and down-road illumination. Halogen low-beams shine at 1,350 lumens with a lifetime of approximately 2,000 hours. Peterbilt is one of the only OEMs to feature **High-Intensity Discharge (HID)** lights that provide 3,200 lumens and about 3,000 hours of bulb life.
- ▶ Headlamps have integrated daytime running lights and separate LED turn signals.
- ▶ LED marker lamps provide long life and reduced service costs.
- ▶ LED headlamps, largely used by competitors for styling, do not provide down-road coverage as well as the 579's HID lights.



Peterbilt
Model 579



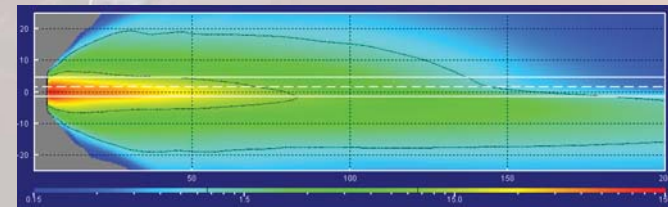
Freightliner
Cascadia Evolution



International
ProStar



Volvo
VN 780



Headlight Illumination Plot

	Peterbilt Model 579	Freightliner Cascadia Evolution	International ProStar	Volvo VN 780
Type	Projector Beam, Poly Lens	Projector Beam, Poly Lens	Projector Beam, Poly Lens	Projector Beam, Poly Lens
Performance	Excellent	Good	Average	Average
Serviceability	No Tools, Standard Bulbs	No Tools, Standard Bulbs	No Tools, Standard Bulbs	No Tools, Standard Bulbs
Marker Lights	LED, Flush	LED, Raised	LED, Raised	LED, Flush
Available Options	High Intensity Discharge, Fog Lights	Fog Lights, LED	Fog Lights, LED	Fog Lights

BAGGAGE/ ACCESS DOORS

- ▶ The Model 579 is standard with **full-door entry into the sleeper, which is the largest in the industry**, and is available with a passenger-side utility door for quick, convenient access to under-bunk storage.
- ▶ Both doors can be opened from the outside so the driver doesn't have to enter the truck to open them and both doors lock for added security. Additionally, the full-height door has an optional power lock/unlock feature and interior release handle.
- ▶ Both doors are sized to accommodate a typical "milk crate" storage container with added height clearance and provides door locks to ensure the driver's belongings are secure.



Peterbilt
Model 579



Freightliner
Cascadia Evolution



International
ProStar



Volvo
VN 780

Baggage Door Height (Inside)	18.75"	12.25"	15"	16"
Baggage Door Width (Inside)	20.5"	27.75"	25"	25"
Access Door Height (Inside)	47.25"	32.5"	N/A	13"
Access Door Width (Inside)	20.75"	23"	N/A	28"
Window Option	Both Sides	Both Sides	Both Sides	Both Sides
Window Height (RH / LH)	13.75" / 8"	20"	14"	12"
Window Width (RH / LH)	19" / 13.5"	21"	21"	24"
Door Lock	Both Lock	Open from Inside	Baggage Lock, Open from Inside	None, Open from Underneath



{ AERODYNAMICS }

The Model 579 is Peterbilt's most fuel efficient vehicle to date. Designed for superior aerodynamic performance, engineers utilized Computational Fluid Dynamics to test, refine and validate the 579's fuel efficiency. Plus, a selection of aerodynamic packages provides the right combination of fairings, skirts and closeouts for additional aerodynamic enhancements. Increasing fuel economy benefits even further is the new 579 EPIQ, which includes numerous exterior aerodynamic features as well as a fully integrated powertrain with the PACCAR MX-13 engine and an enhanced transmission, called APEX. The 579 EPIQ package improves overall fuel economy by as much as 14% versus previous EPA 2010 compliant models.



579 EPIQ



579 EPIQ

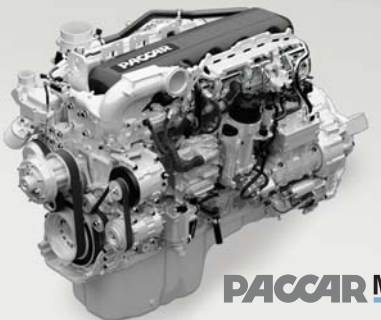
THE MOST FUEL-EFFICIENT PETERBILT PACKAGE AVAILABLE.

The new Peterbilt Model 579 EPIQ delivers numerous innovative aerodynamic features, improved PACCAR MX-13 performance and an enhanced transmission in a fuel-efficient combination of performance and technology. EPIQ improves fuel economy performance up to 14% versus previous EPA 2010 compliant models. Peterbilt's innovative fuel-economy technology extends to its electronics. Fuel optimization is part of the spec'ing process, enabling the vehicle to be maximized around the customer's needs. With fuel economy optimization software, Peterbilt's technological advancements provide the optimal balance of fuel-efficiency and fleet performance.

For more information on the Model 579 EPIQ, contact your local Peterbilt dealer or visit www.peterbilt.com



- 579 EPIQ INCLUDES:**
1. 3-Piece Bumper with Aero Bumper Dam
 2. Aerodynamic Hood with Wheel Closeouts
 3. MX-13 Engine / Transmission Enhancements
 4. Driver Performance Assistant Coaching Technology
 5. Exterior Mirror
 6. Optimized Sunvisor
 7. Pulled Forward Roof Fairing
 8. Roof Fairing Close-Out and Trailer Bridge
 9. Extenders with Rubber Guard
 10. Tire Pressure Monitoring
 11. Side Skirts (above & below chassis fairing)
 12. Extended Chassis Fairings with Kick-Out



FUEL-EFFICIENT PERFORMANCE
 The combination of the PACCAR MX-13 engine and Eaton Fuller Advantage Series automated transmission provides a fully integrated powertrain that reduces weight to improve fuel economy and overall performance. Smooth, automated shifting makes driving easier, resulting in fewer clutch-related wear issues.



DRIVER PERFORMANCE
 The EPIQ driver display package features large, easy-to-read, operation-critical gauges including a "sweet spot" indicator for optimal fuel usage. Peterbilt's Driver Performance Assistant Technology provides real-time coaching to help drivers improve fuel economy, reduce brake wear and monitor other performance factors.

CHASSIS FAIRINGS

- ▶ The Model 579's fairing system is truly integrated with the vehicle, so owners don't have to sacrifice convenience for improved aerodynamic performance.
- ▶ Peterbilt is one of the only OEM's to offer a **front fairing service door to provide quick access to the batteries**. Peterbilt also provides **service steps to access the cab** if the front fairing is removed, while other OEM's require a ladder for cab access during repairs.
- ▶ Molded in-color fairings reduce service costs since repainting is not required for replacement fairings.
- ▶ Two-piece side extenders with rubber flares improve aerodynamics while supporting a tight turning radius.
- ▶ Flexible and durable rubber side skirts are integrated into the chassis fairings.
- ▶ Aerodynamic performance is further optimized with optional bumper air dam and closeouts, wheel well closeouts and rear wheel covers.



Peterbilt
Model 579



Freightliner
Cascadia Evolution



International
ProStar



Volvo
VN 780

	Peterbilt Model 579	Freightliner Cascadia Evolution	International ProStar	Volvo VN 780
Number of Panels	3	3	2	3
Material Options	Painted and Molded In-Color	Painted and Molded In-Color	Painted and Molded In-Color	Painted
Door Options	Battery Service Door	Small Service Door	Small Service Door	No Service Door
Serviceability – Steps	Yes	None	None	None
Serviceability – Removal	Via 6 Bolts	1st Panel via 2 Latches	Via 4 Bolts & 2 Hooks	1st Panel via 2 Latches
Cab Step Spacing Dimensions (in.)				
Front – Step 1	17"	16"	19.25"	18.5"
Front – Step 2	16.5"	17.5"	18.25"	17.5"
Front – Step 3	16.75"	15.5"	14.5"	12.5"
Chassis Step Spacing Dimensions (in.)				
Rear – Step 1	16.5"	10"	18"	18.5"
Rear – Step 2	16.75"	10.75"	11.75"	17.5"
Rear – Step 3	5"	18"	9"	3"

SIDE EXTENDERS & OTHER AERO DEVICES

- ▶ Peterbilt's leadership in aerodynamic performance is prevalent with such accomplishments as the 10.7 mpg Supertruck and as recent as the announcement of the new and improved EPIQ aerodynamic package.
- ▶ EPIQ aerodynamic improvements include bumper air dam and closeouts, wheel well closeouts, and more optimized chassis fairings and side skirts.
- ▶ Peterbilt offers 2-piece side extenders with a rubber flare that offers excellent aerodynamics while supporting a tight turning radius.
- ▶ Rubber side skirts are integrated into the chassis fairings providing flexible yet durable fuel saving features with easy serviceability.
- ▶ Optional rear wheel covers reduce drag along the wheel troughs, improving fuel economy.



Peterbilt
Model 579



Freightliner
Cascadia Evolution



International
ProStar



Volvo
VN 780

Number of Pieces	2	2	2	2
Material	Rubber	Rubber	Rubber	Rubber
Side Skirts – Under Cab	Optional	Integrated into Chassis Fairing	Integrated into Chassis Fairing	Integrated into Chassis Fairing
Side Skirts – Below Chassis Fairing	Optional	Optional	Optional	Optional
Exterior Sunvisor	Painted Body or Bright	None	Painted Body or Bright	Painted
Other Aero Devices	Bumper Seal Wheel Covers – Stainless/Polycarb	Aero Mud Flap Wheel Covers – Polycarb/Vinyl	Bumper Seal	Roof & A-Pillar Updates



{ CAB INTERIOR }

The Model 579 cab interior is the epitome of comfort and sophistication. The ergonomic design features an angled dash with a lowered brow for increased visibility, LED backlit gauges and switches and controls within easy reach. The 579 driver display package features large, easy-to-read, operation-critical gauges. Automatic temperature control and numerous airflow outlets provide outstanding heating and cooling performance. Doors on the 579 cab close easily and exude luxury-automobile quality. The wide, 2.1" meter cab provides plenty of belly room and space between the seats for maximum driver comfort. The cab is the quietest in the industry and features all-LED lighting, soft touch amenities and functional features such as useful storage, retractable cup holders and a pull-out work surface.



DASH & INFOTAINMENT

- ▶ With the newest interior in the industry, the Model 579's cab features modern styling, premium materials and an ergonomic layout. Luxury and productivity merge into an environment that operators want to drive, and helps fleets recruit and retain the best drivers available.
- ▶ The premium two-tone dash features luxurious soft-touch appointments. The dash is accented by woodgrain trim and, unlike competitive models, there's not an exposed fastener to be seen.
- ▶ **The industry's only Driver Information Center is easily visible, providing operators with valuable performance data and vehicle diagnostics.** The new Driver Performance Assistant is integrated into this system and coaches operators to maximize fuel economy and reduce component wear through smarter driving habits.
- ▶ The SmartNav system puts navigation, phone, music and vehicle performance data at the operator's fingertips with an interactive, full-color 7-inch display, and is Bluetooth compatible for hands-free operation.
- ▶ An anti-theft deterrent system is available at no charge providing peace of mind. Many OEM's charge for similar systems.



Peterbilt
Model 579



Freightliner
Cascadia Evolution



International
ProStar



Volvo
VN 780

Dash Styling	Two-Tone Hidden Fasteners	Two-Tone Exposed Fasteners	Two-Tone Hidden Fasteners	Two-Tone Exposed Fasteners
Top of Dash	Padded Soft-Touch	Padded Soft-Touch	Plastic without Padding	Plastic without Padding
Glovebox	Full Glovebox	Small Glovebox	None	Optional Center Console Storage
Radio Position	In-Dash	In-Dash	In-Dash	In-Dash
Infotainment Device	Yes – SmartNav	No	No	No
Cup Holders	2, Retractable, Clear of Switches	2, Fixed, Blocks Switches	3, Fixed, Clear of Switches	2 Fixed, Clear of Switches
Gauge Display	Automotive Style	Automotive Style	Automotive Style	Automotive Style
Switches	Rockers with Large Icons, Switch Lockouts	Rocker with Small Text	Rocker with Small Text	Rocker with Small Text
Anti-Theft Device	Code via Driver Center	Requires Aftermarket	Yes, Takes Up 6 Switches	Requires Aftermarket
Driver Coaching System	Yes, Driver Performance Assistant	No	No	No



PETERBILT VALUE

Peterbilt's Driver Performance Assistant coaching technology improves driver habits and ultimately fuel economy as much as 5%, saving customers up to \$2,500 annually per truck.

STEERING WHEEL, COLUMN & PEDALS

- ▶ Convenience and ergonomics are front and center with the multi-function steering wheel and a full tilt and telescoping steering column.
- ▶ Backlit buttons in the steering wheel control audio and cruise control.
- ▶ The Model 579's hanging pedals provide ample space and are positioned rearward of the engine where they can be spread apart for improved ergonomic positioning. The throttle pedal touches the floor with a more natural foot angle. The **clutch pedal features standard air-over-hydraulic assist that reduces actuation force by nearly half** versus competitive designs. Additionally, hanging pedals reduce floor cutouts, resulting in a quieter cab.
- ▶ Driver feedback indicates drivers experience less fatigue and greater comfort though the Model 579 pedal positioning and hydraulic assist clutch.



Peterbilt
Model 579



Freightliner
Cascadia Evolution



International
ProStar



Volvo
VN 780

Steering Wheel Options	Vinyl and Leather	Vinyl and Leather	Vinyl and Leather	Vinyl and Leather with Airbag
Multi-Function Steering Wheel Content	Radio Cruise Controls	Cruise Controls Marker Interrupter Air Horn Engine Brake	Cruise Controls Marker Interrupter Air Horn Headlight Flash	Radio Marker Interrupt Headlight Flash Phone Controls
Steering Column Options	Fixed, Tilt and Telescope	Fixed, Tilt and Telescope	Fixed, Tilt and Telescope	Fixed, Tilt and Telescope
Pedal Placement	Ample Pedal Room	Doghouse Cramps Pedals	Doghouse Cramps Pedals	Doghouse Cramps Pedals
Clutch	Air-Over-Hydraulic Assist	Hanging	Hydraulic Assist	Hanging
Brake	Hanging	Hanging	Hanging	Hanging
Throttle	Hybrid	Hanging	Hanging	Hanging
Steering Wheel Travel (in.)				
Telescopic Steering Wheel Travel	5"	7"	4.5"	6"
Floor to Bottom Edge – In and Down	23"	21"	22.5"	23.75"
Floor to Bottom Edge – Out and Up	28"	30.75"	31.75"	32.75"

HVAC

- ▶ **The blended-air HVAC system is the most technologically advanced available**, featuring brushless motor technology and precision temperature controls that are managed with two-sensor technology for the industry's only "set it and forget it" system.
- ▶ Strategically placed vents, combined with high capacity evaporators and heater, provides the ultimate in performance.
- ▶ **SmartAir™ is offered as a factory-installed, no-idle system that outperforms competitive OEM and aftermarket systems.** Double-insulated curtains and increased insulation in the interior pads improve SmartAir's effectiveness and supports the 10-hour performance cycle on a single battery charge. Multiple battery locations support even the most stringent wheel base needs.



Peterbilt
Model 579



Freightliner
Cascadia Evolution



International
ProStar



Volvo
VN 780

Cab Unit	Blend Air	Blend Air	Blend Air	Water Valve
Total Number of Dash Vents	5	6	4	4
Number of Driver Vents	3	4	2	2
Heater	Aluminum	Copper	Copper	Aluminum
Evaporator	Aluminum	Aluminum	Aluminum	Aluminum
Blower Motor	Brushless	Brushless	Brush	Brush
Controls	Standard with Automatic Temperature Control	Optional CDTC*	Manual	Optional CDTC*
Compressor Manufacturer	Sanden	Denso	Sanden	Sanden
Sleeper Unit	Blend Air	Blend Air	Blend Air	Blend Air
Sleeper Heater	Aluminum	Copper	Aluminum	Aluminum
Sleeper Evaporator	Aluminum	Aluminum	Aluminum	Aluminum
Blower Motor	Brush	Brushless	Brush	Brushless
Total Number of Sleeper Vents	3 to 5	4 to 8	3 to 5	3 to 5
No-Idle System	SmartAir, Holds at 73 Degrees	ParkSmart, Holds at 78 Degrees	MaxxPower, Holds at 78 Degrees	Webasto Fuel Heater Only
No-Idle System Restart	Auto Start/Stop Available		Auto Start/Stop Available	



PETERBILT VALUE

- Brushless blower motors increase motor life by 67% or 10,000 hours, compared to some competitive designs, resulting in reduced repair frequency.
- Automatic Temperature Control is standard in the Model 579 improving overall driver comfort. Typical systems can cost \$200 or more when optioned.
- SmartAir improves vehicle fuel economy by up to 4% versus idling which saves customers \$2,000 annually per truck.

* Constant Discharge Temperature Control

* Constant Discharge Temperature Control

SEATING

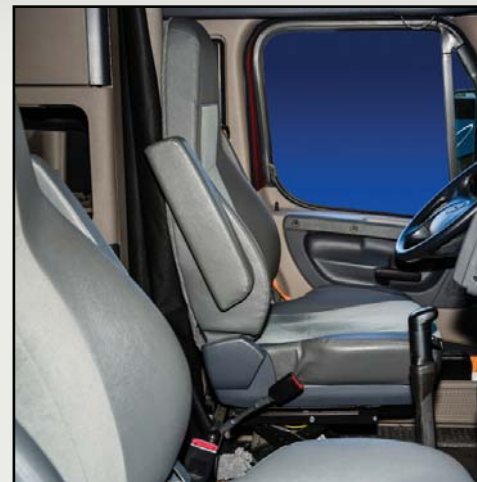
- ▶ The Model 579 – which has the **industry's longest seat travel to adjust to a wide range of driver heights** – is standard with Peterbilt ST seats. The Peterbilt ST seats are among the most comfortable and accommodating in the industry with adjustable lumbar support, optional heating and several choices of colors and upholstery.
- ▶ Optional premium Peterbilt LX seats feature two-chamber lumbar support, adjustable side bolsters, adjustable suspension settings, additional storage pockets and optional heating and cooling.
- ▶ Additional features include seat pad adjustment capability while seated, separate controls – each with a different tactile feel – and a wider seat base to provide a more stable ride.



Seat Adjustments



Peterbilt Model 579



Freightliner Cascadia Evolution



International ProStar



Volvo VN 780

Seat Manufacturer	GraMag	Isringhausen	National	National
Seat Dimensions (in.)				
Seat Travel – Forward and Back	9.75"	6.25"	8.75"	6.75"
Seat Travel – Up and Down	6.5"	5"	6"	6"
Total Cushion Depth with Seat at 90 Degrees	22"	21"	23"	21"
Seat Cushion Width	21"	23.25"	21.25"	21.75"
Outside Width with Dual Arm Rests	25"	26.5"	23.5"	24.75"
Distance Between Seats at Mid-Seat	23"	24"	24.25"	27.7"
Seat Travel Dimension (in.)				
Mid Seat to Steering Wheel – Seat Forward	12.5"	11.5"	13.75"	11"
Mid Seat to Steering Wheel – Seat Backward	21"	19.5"	21.5"	16.25"

DOORPADS

- ▶ Luxury extends to the inside of the cab doors with **soft-touch inserts, comfortable arm rests**, integrated switch controls, chrome door handle and ample map pockets.
- ▶ The door's soft-touch accents are instantly appreciated after comparing the Model 579 door pads to the hard, plastic designs offered by competitors.
- ▶ Safety features are also integrated into the door pads with **standard illuminated lamps that act as a beacon to other motorists** when the operator is exiting or entering the vehicle, and **illuminates the cab steps for safer ingress and egress**.



Peterbilt
Model 579

Material	Plastic
Top Surface	Padded, Soft-Touch Arm Rest
Switches	Door, Window and Mirror
Door Handle	Chrome Plastic
Map Pocket Capacity	Average
Light / Reflector	Light and Reflector



Freightliner
Cascadia Evolution

Material	Plastic
Top Surface	Hard Plastic and Rubber
Switches	Door, Window and Mirror
Door Handle	Black Plastic
Map Pocket Capacity	Average
Light / Reflector	Light and Reflector



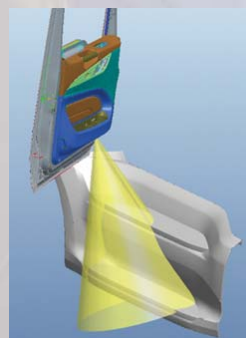
International
ProStar

Material	Plastic
Top Surface	Hard Plastic
Switches	Door, Window and Mirror
Door Handle	Chrome Plastic
Map Pocket Capacity	Average
Light / Reflector	Reflector



Volvo
VN 780

Material	Plastic
Top Surface	Hard Plastic
Switches	Door, Window and Mirror
Door Handle	Plastic, Small, Top of Door
Map Pocket Capacity	2 Compartments
Light / Reflector	Forward Side of Door



Courtesy Lighting



SLEEPER INTERIOR

The spacious Model 579 sleeper is unmistakably Peterbilt, providing a warm and inviting atmosphere and a home away from home. Abundant storage, ambient lighting, flat-screen TV accommodations and other creature comforts offer a relaxing, comfortable environment. Complete with a functional business area, the sleeper also doubles as a convenient office. Additional features include the industry's widest use of LED lighting, sound abatement technology that minimizes outside noise and a climate control system for excellent heating, cooling and air circulation. The 579 is available in detachable 44", 58", 72" and 80" configurations for added versatility and the longevity of a second life for highest resale value.



SLEEPER FEATURES

- ▶ Four detachable sleepers are available for the Model 579: 44", 58", 72" and 80". Premium materials, numerous amenities and luxurious accents let operators make the most of their off-duty time, whether resting or completing non-driving tasks.
- ▶ **LED lighting is used throughout the sleeper** for pleasant illumination that reduces eye fatigue. Climate controls are also located in the sleeper, letting drivers adjust the temperature from the bunk.
- ▶ A dimmable ambient lighting package is available providing customizable light levels that improve overall driver comfort.
- ▶ The 72" and 80" sleepers are available with an upper bunk option for team drivers or additional storage.
- ▶ Sleeper interiors are offered in Buckskin or Titanium and in two interior levels, Premier or Platinum.
- ▶ The detachable sleepers offer second or third life flexibility, increasing resale value.
- ▶ Peterbilt sleepers are designed to provide superior comfort while maintaining a productive work environment. Heading into the sleeper, **the floor to cab header height leads the industry** with ample room to stand. **Peterbilt's 80" sleeper is the longest in the industry** as evidenced by the cab and throttle position to sleeper back wall available space.



Peterbilt
Model 579




Freightliner
Cascadia Evolution



International
ProStar



Volvo
VN 780

	Peterbilt Model 579	Freightliner Cascadia Evolution	International ProStar	Volvo VN 780
Sleeper Type	80" Mid-Roof	72" Full Height	73" Full Height	77" Full Height
Number of Lights	7	8	5	9
Type of Light 	LED	Incandescent	Incandescent	Incandescent
Sleeper Width (Inches)				
A-Pillar to A-Pillar	66.5"	73"	69.25"	73.25"
Width at Side Glass	76.5"	85"	78"	83"
B-Pillar to B-Pillar (Top of Dash)	69.5"	79"	71.5"	78"
Top of Lower Bunk	88.75"	90.5"	88.75"	85"
Sleeper Height and Depth (Inches)				
Floor to Bottom of Cab Header	54"	52.5"	49.25"	53.25"
Floor to Ceiling at B-Pillar	70"	92"	89"	90.5"
Floor to Ceiling at Front of Bunk	76"	97.5"	95"	95.5"
Seat to Back Wall – Back Position	70"	66.75"	64"	73"
Seat to Back Wall – Forward Position	80"	73.5"	72.75"	79.5"
Throttle to Sleeper Back Wall	116"	106.25"	110.5"	116"



PETERBILT VALUE

LED lighting, compared to the competition's incandescent lighting, offers increased bulb life which reduce bulb replacement. Over the life of a vehicle, eliminating bulb replacement can save customers as much as \$300 per truck.

BUNK SIZE

- ▶ The Model 579 features an **85" long mattress, the longest in the industry**, that is made from premium materials. **The 8.25" deep mattress has a premium coil design – the plushest the industry has to offer** – providing drivers a more comfortable rest. The lower mattress size adjusts when a TV package is optioned to optimize TV size.
- ▶ Both the 72" and 80" sleepers offer optional upper bunk configurations which include a folding bunk pan and access features such as grab handles and a reinforced sleeper work surface that doubles as a convenient step.



Peterbilt
Model 579



Freightliner
Cascadia Evolution



International
ProStar



Volvo
VN 780

Lower Mattress Size

Length	85"
Width	42"
Mattress Depth	8.25"
Height of Bunk Pan (Top) from Floor	15.8"

Upper Mattress Size

Length	87"
Width	31"
Mattress Depth	4"
Height of Bunk Pan (Top) from Floor	48.5"
Upper Bunk Pan to Roof (at Front)	27.5"
Upper Bunk Pan to Roof (at Rear)	27.5"
Offset Distance, Upper to Lower Bunk (Front)	8.5"

Length	80"
Width	36"
Mattress Depth	7"
Height of Bunk Pan (Top) from Floor	15.25"

Length	78"
Width	28.5"
Mattress Depth	4"
Height of Bunk Pan (Top) from Floor	61.5"
Upper Bunk Pan to Roof (at Front)	37.75"
Upper Bunk Pan to Roof (at Rear)	41.25"
Offset Distance, Upper to Lower Bunk (Front)	4"

Length	80"
Width	41"
Mattress Depth	6.75"
Height of Bunk Pan (Top) from Floor	15"

Length	82"
Width	33"
Mattress Depth	5"
Height of Bunk Pan (Top) from Floor	63"
Upper Bunk Pan to Roof (at Front)	33"
Upper Bunk Pan to Roof (at Rear)	39"
Offset Distance, Upper to Lower Bunk (Front)	1"

Length	75"
Width	36"
Mattress Depth	6"
Height of Bunk Pan (Top) from Floor	16.5"

Length	72"
Width	28"
Mattress Depth	4"
Height of Bunk Pan (Top) from Floor	61"
Upper Bunk Pan to Roof (at Front)	36"
Upper Bunk Pan to Roof (at Rear)	39"
Offset Distance, Upper to Lower Bunk (Front)	0"

CABINETS & STORAGE

- ▶ Abundant storage and premium fit and finish are integrated throughout the sleeper.
- ▶ A full 42" wardrobe closet allows for garments to be hung without touching the floor.
- ▶ The driver-side cabinet assembly features a work station with a pull-out table and laptop storage. The control panel puts HVAC and sound system controls at the driver's fingertips. Areas for a pantry, microwave and optional integrated refrigerator gives drivers control over their meals for healthier and more cost effective dining options.
- ▶ Among the numerous amenities is an installation package that can accommodate 24" LCD or LED televisions. Some competitive sleepers only allow for CRT televisions resulting in a less desirable viewing experience.



Peterbilt
Model 579



Freightliner
Cascadia Evolution

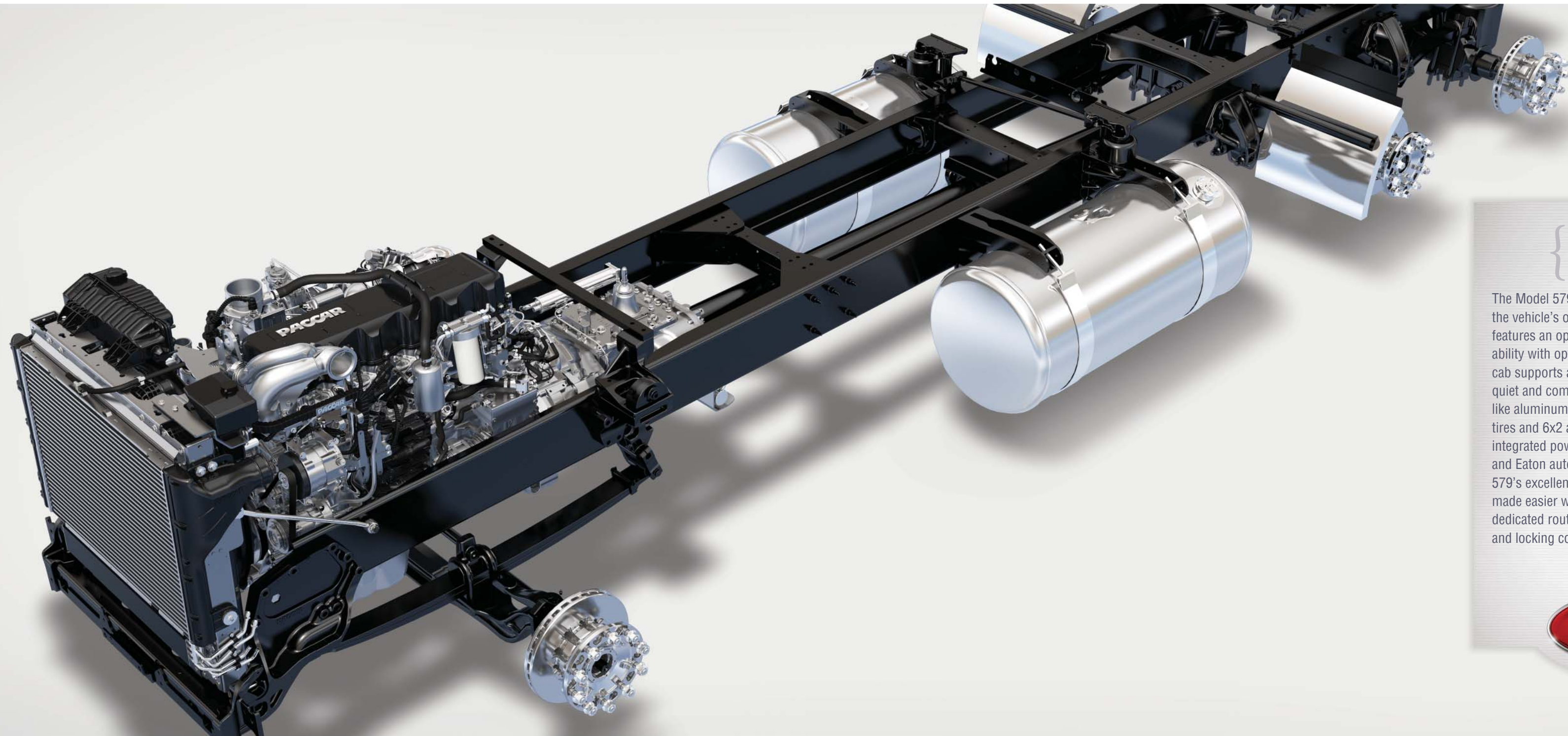


International
ProStar



Volvo
VN 780

Total Cubic Feet	61'	42.2'	54'	67.6'
Interior Construction	Covered	Exposed	Exposed	Exposed
Door Options	Optional	Standard with Doors	Optional	Optional
Passenger Side Towers (Total Storage ft.³)	16.70	11.33	12.59	11.62
Driver Side Towers (Total Storage ft.³)	11.20	10.92	10.25	4.00
Over Bunk (Total Storage ft.³)	3.6	N/A	5.10	N/A
Rear Wall (Total Storage ft.³)	3.4	N/A	0.73	N/A
Under Bunk (Total Storage ft.³)	24.6			
Cab Front Header (Total Storage ft.³)	1.50	1.70	0.87	3.86



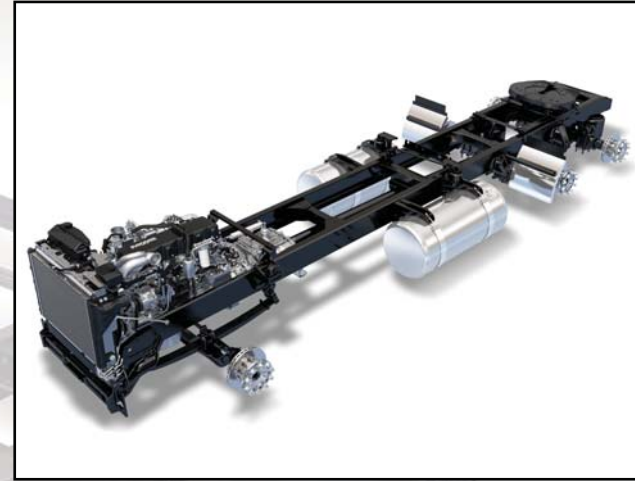
{ CHASSIS }

The Model 579 chassis serves as the foundation for the vehicle's outstanding performance. The chassis features an optimal ride height, improved maneuverability with optimized steering gear geometry, wider cab supports and increased rigidity for a more smooth, quiet and comfortable ride. Lightweight components like aluminum 5th wheels and air tanks, wide based tires and 6x2 axle configurations, along with the APEX integrated powertrain of the PACCAR MX-13 Engine and Eaton automated transmission, contribute to the 579's excellent fuel economy. And serviceability is made easier with optimized system routings including dedicated routing troughs, air-over-electric technology and locking connectors to increase reliability.



CHASSIS

- ▶ The Model 579 chassis is strong and durable, exceeding all on-highway and vocational durability tests. Cab supports are positioned wider on the frame for excellent ride quality and maneuverability. The one-piece aluminum cross-members are light but strong, providing for a stiffer frame section which reduces noise and improves ride comfort.
- ▶ The 579 can be configured with either a 117" BBC or 123" BBC.
- ▶ The 579 offers the **industry's best maneuverability with a 62-foot curb-to-curb turning radius**, almost 9 feet better than some competitors.
- ▶ Safety leadership is extended through standard front disc brakes and electronic stability control. Optional rear disc brakes and collision avoidance technology further improve safety performance.



Peterbilt
Model 579

Cab Mounts	Air Bags Outside Frame
Cross Members	1-Piece Cast Aluminum
Frame	Straight Rail with Extension
Maneuverability	
Curb to Curb – Right	62.2'
Curb to Curb – Left	62.2'
Roll Stability	Standard Electronic Stability Control



Freightliner
Cascadia Evolution

Air Bags Inside Frame
5-Piece Steel
Straight Rail with Extension
63.2'
63.2'
Optional Electronic Stability Control



International
ProStar

Air Bags Outside Frame
N/A
Straight Rail with Extension
63'
62.6'
Optional Electronic Stability Control



Volvo
VN 780

Air Bags Outside Frame
N/A
Splayed Rail – More Costly, Engine Sits Lower
71'
64.2'
Standard Electronic Stability Control



Chassis Overbell Support

SMARTLINQ



SMARTLINQ

MAXIMIZE YOUR UPTIME!

Peterbilt's SmartLINQ™ complements fleet management operations by providing real-time notifications should a vehicle's onboard diagnostics system generate a service event. This easy-to-use, web-based system helps you prioritize which trucks should be serviced at the next convenient opportunity or which may need immediate attention. SmartLINQ provides four levels of notification – Stop Now, Service Now, Service Soon and Informational – as well as the codes generated from any vehicle requiring service. SmartLINQ allows the fleet to proactively schedule a service appointment with a Peterbilt dealer to ensure the needed resources are available when the vehicle arrives, getting your truck back on the road as quickly as possible. With SmartLINQ, Peterbilt helps you eliminate unscheduled downtime, maintain on-time freight delivery and maximize profitability.

HERE'S HOW IT WORKS:



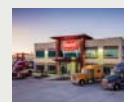
SmartLINQ monitors each vehicle's performance to detect when a diagnostic code is activated.



The on-board telematics communicates the code information, including all event data, to SmartLINQ's back-office services powered by PACCAR Solutions.



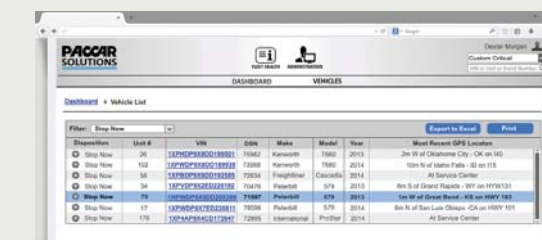
The diagnostic codes are instantly analyzed and communicated to the fleet manager, as well as displayed in detail on the PACCAR Solutions' Web Portal. Code severity, possible solutions and the nearest Peterbilt dealership recommendations are also provided.



Once the information is reviewed, an action plan can be developed between the fleet manager and the preferred dealer helping keep the truck in operation until service can be conveniently scheduled.



SmartLINQ's web portal provides a geographical view of a fleet's vehicles, color coded by severity. Data can be sorted by diagnostic code, code severity and its geographical location to easily see the vehicle's performance information.



By selecting a Vehicle Identification Number, key information is displayed such as diagnostics data, troubleshooting guidance and recommended actions, as well as the nearest Peterbilt dealership for quick and convenient service.

